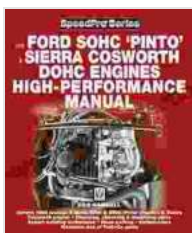


# **Unveiling the Powerhouses: A Comprehensive Guide to the Ford SOHC Pinto, Sierra Cosworth DOHC, and High-Performance Manual**

Ford Motor Company has a rich history of producing iconic engines that have left an indelible mark on the automotive industry. Among these legendary powerhouses are the SOHC Pinto, Sierra Cosworth DOHC, and High-Performance Manual. This comprehensive guide will delve into the history, performance capabilities, and legacy of these remarkable engines, providing an in-depth understanding of their significance in the Ford lineage.

## **The SOHC Pinto: A Powerhouse in Disguise**



## The Ford SOHC Pinto & Sierra Cosworth DOHC Engines high-peformance manual (SpeedPro series)

by Des Hammill

★★★★☆ 4.3 out of 5

Language : English  
File size : 2564 KB  
Text-to-Speech : Enabled  
Screen Reader : Supported  
Enhanced typesetting : Enabled  
Print length : 144 pages  
Lending : Enabled

FREE

DOWNLOAD E-BOOK



Introduced in 1971, the SOHC Pinto engine was a 2.0-liter, four-cylinder powerplant that found its home in various Ford vehicles, including the Pinto, Mustang II, and Capri. Despite its unassuming appearance, the SOHC Pinto possessed an impressive power-to-weight ratio, thanks to its lightweight construction and efficient design.

The SOHC Pinto featured a single overhead camshaft (SOHC), which operated the valves through rocker arms. This design allowed for precise valve timing and improved airflow, resulting in increased performance and fuel economy. Moreover, the engine's compact size and lightweight aluminum cylinder head made it ideal for use in smaller vehicles, where space and weight were crucial.

In its stock configuration, the SOHC Pinto produced a respectable 96 horsepower and 107 lb-ft of torque. However, with careful tuning and modifications, these engines were capable of producing significantly higher power outputs. This versatility made the SOHC Pinto a popular choice for enthusiasts seeking to enhance the performance of their vehicles.

## **The Sierra Cosworth DOHC: A Racing Legend**

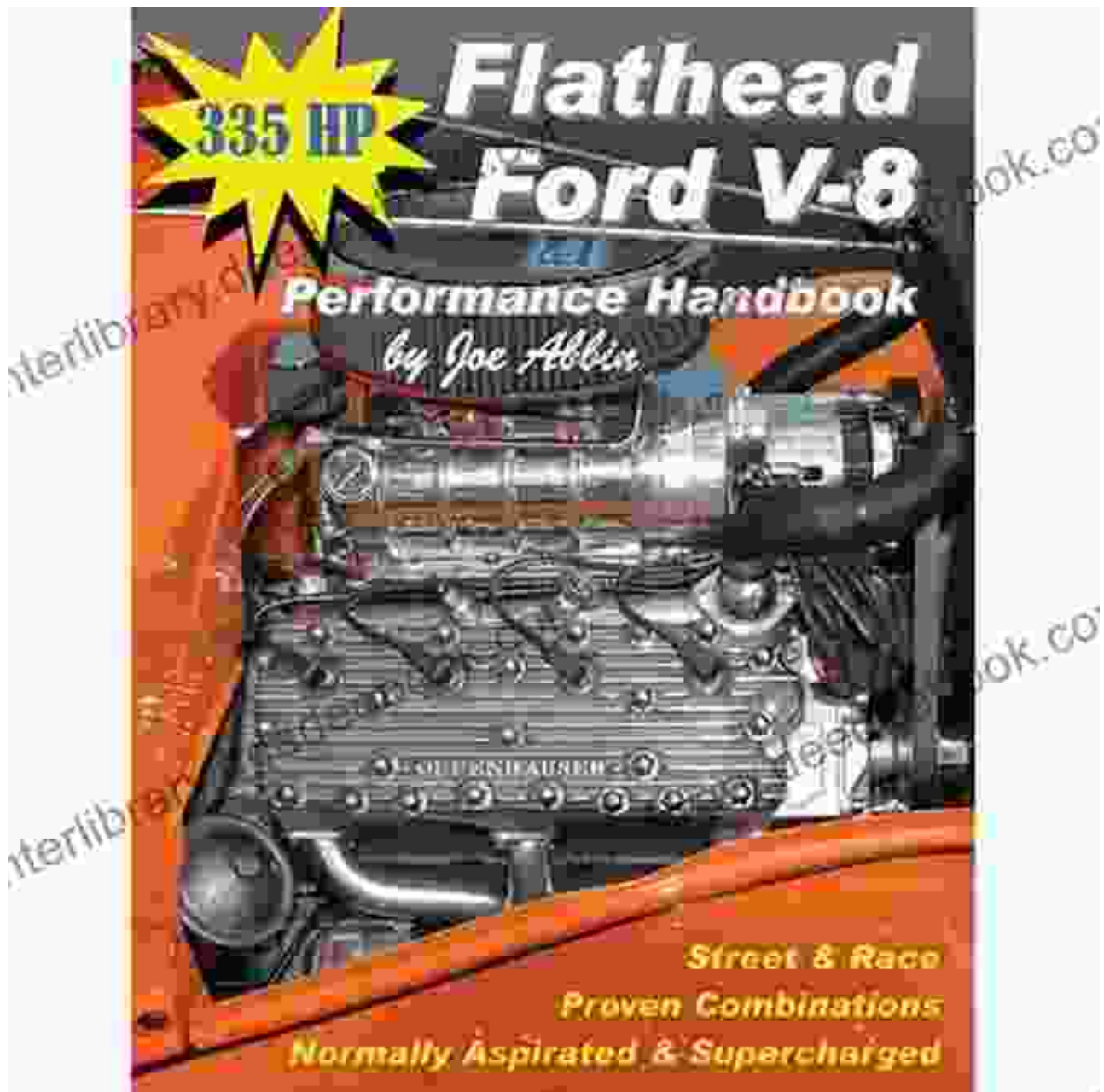


Unveiled in 1985, the Sierra Cosworth DOHC engine was a turbocharged, 2.0-liter, four-cylinder powerplant that powered the legendary Ford Sierra Cosworth rally car. Developed in collaboration with Cosworth Engineering, this engine was a technological marvel that set new standards for performance in its era.

Unlike the SOHC Pinto, the Sierra Cosworth DOHC featured a twin overhead camshaft (DOHC) design. This setup allowed for more precise valve timing and increased airflow, resulting in exceptional power output. Additionally, the engine was equipped with a Garrett T3 turbocharger, which boosted its performance even further.

In its standard configuration, the Sierra Cosworth DOHC engine produced a staggering 204 horsepower and 224 lb-ft of torque. However, with race-spec modifications, these engines were capable of producing over 500 horsepower, making them a formidable force on rally stages around the world.

## The High-Performance Manual: A Driver's Delight



Alongside these iconic engines, Ford also produced a series of High-Performance Manuals that were renowned for their precision and durability. These transmissions were designed to handle the increased power and torque of the SOHC Pinto and Sierra Cosworth DOHC engines, providing drivers with a responsive and engaging driving experience.

The High-Performance Manuals featured a robust construction with close-ratio gearing, which allowed for quick and precise gear changes. They also incorporated a Hurst shifter, known for its short and crisp throws, enhancing the driver's control over the vehicle.

Whether it was the smooth and efficient shifting of the SOHC Pinto-powered Mustangs or the lightning-fast gear changes in the Sierra Cosworth rally cars, the High-Performance Manuals played a crucial role in unlocking the full potential of these legendary engines.

## **Legacy and Significance**

The Ford SOHC Pinto, Sierra Cosworth DOHC, and High-Performance Manual have left a lasting legacy in the automotive world. These powerhouses have not only powered iconic vehicles but have also inspired generations of enthusiasts and engineers.

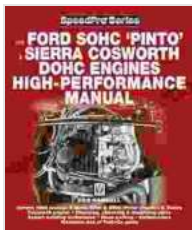
The SOHC Pinto's compact design and efficient performance made it a popular choice for affordable and fuel-efficient vehicles. Its versatility and aftermarket support have also made it a favorite among enthusiasts seeking to enhance their vehicles' performance.

The Sierra Cosworth DOHC is considered one of the greatest rally engines of all time. Its combination of power, reliability, and responsiveness helped

the Sierra Cosworth achieve numerous victories on some of the most challenging rally stages in the world.

The High-Performance Manual is a testament to Ford's commitment to driver engagement and performance. Its precise and durable design has provided drivers with an unparalleled connection to their vehicles, enhancing the overall driving experience.

The Ford SOHC Pinto, Sierra Cosworth DOHC, and High-Performance Manual are more than just engines and transmissions; they are symbols of innovation, performance, and driving passion. Their legacy continues to inspire and captivate enthusiasts worldwide, ensuring that these iconic powerhouses will forever hold a special place in automotive history.



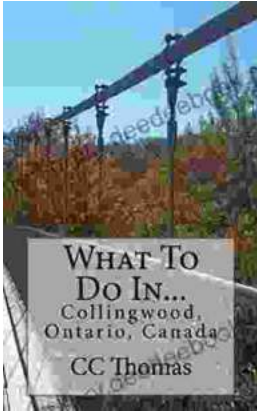
## The Ford SOHC Pinto & Sierra Cosworth DOHC Engines high-performance manual (SpeedPro series)

by Des Hammill

★★★★☆ 4.3 out of 5

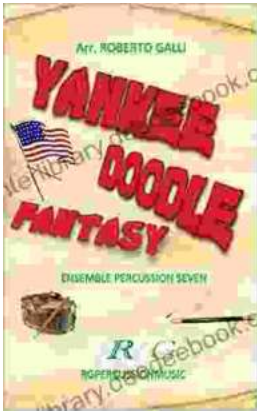
Language : English  
File size : 2564 KB  
Text-to-Speech : Enabled  
Screen Reader : Supported  
Enhanced typesetting : Enabled  
Print length : 144 pages  
Lending : Enabled





## Discover the Enchanting Allure of Collingwood, Ontario, Canada

Nestled amidst the breathtaking landscape of Ontario, Canada, the charming town of Collingwood beckons travelers with its pristine beaches, picturesque trails, vibrant arts...



## Roberto Galli: Embracing the Fantasy of Yankee Doodle

In the realm of equestrian arts, Roberto Galli stands as a maestro of innovation and enchantment. His masterwork, Yankee Doodle Fantasy, has...